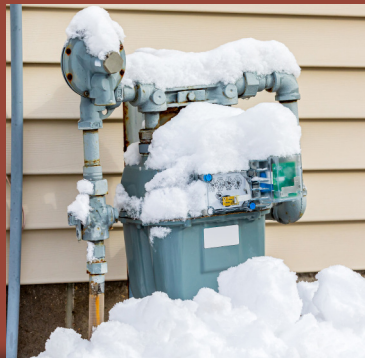


Keep Gas Meters Free of Snow and Ice

The Minnesota State Fire Marshal-Pipeline Safety Team urges pipeline operators, building managers and residents of single- or multi-family buildings to be aware that accumulations of water, ice and snow can cause serious damage to gas facilities. Your outdoor gas meter and equipment are designed to withstand winter weather conditions, but heavy or hard-packed snow and ice on your meter can present a safety hazard.



To avoid problems:

1. Never let snow completely cover your meter.
2. Do not shovel snow up against your meter.
3. Take care when using a snow blower or plow near your meter.
4. Never kick or hit the gas meter or its piping to break away snow or ice.

Centennial Utilities Holiday Hours

**Closed Veteran's Day
Tuesday, November 11**



**Closed
Thanksgiving**

**Thursday,
November 27 &
Friday,
November 28**



www.centennialutilities.com

xpress BILL PAY

IT'S EASY...

Manage your account and pay your utility bill online.

Visit www.centennialutilities.com, click on Xpress Bill Pay under Key Services.

Commission Members

*Commission meets on
Tuesday, November 25 at 5 p.m.*

**Jan Kreminski, Chair
Dwight Benoy
Curt Theis
Eric Peterson
Brian Olson**

Utilities Office

200 Civic Heights Circle
Circle Pines, MN 55014

Phone: 763-784-6751

TDD: 763-231-2617

Emergency after hours:

911 or 763-427-1212

(ask for Centennial Utilities)

Have you Checked your CO Detectors or Smoke Alarms Lately?

It's always a good idea to check batteries in your CO detectors and smoke alarms to ensure proper function. It is also a good idea to have in place a fire escape plan for those in your household. For more information on smoke alarms, CO detectors and fire safety, visit <https://dps.mn.gov/divisions/sfm>.



HeatShare Program Provides Winter Heating Assistance to those in Need

What is HeatShare?

HeatShare is a voluntary nongovernmental program of the The Salvation Army that has been in existence since 1982. When you give to HeatShare, you are helping warm the lives of the elderly, people with disabilities, and others who have nowhere else to turn. HeatShare provides financial assistance on a year-round basis and is used for natural gas, oil, propane, wood and electricity.

Who does HeatShare help?

Seniors 65 years or older with low income and no alternate source of help. People with disabilities who are limited in their ability to maintain income to adequately cover energy costs.

People who have an unexpected crisis and as a result cannot pay for household energy bills.

How can I support my neighbor?

You can give the gift of heat by sending a tax-deductible donation.

Yes, I want to contribute to HeatShare

I am making a one-time contribution of: \$ _____

Name _____

Address _____

City/State/Zip _____

Signature _____

Date _____

Thank you for your generous contribution.



Please make check payable to **HeatShare**, enclose with this form and mail with utility payment.